



WIDEBAFFLE® ABSORBENT PANEL



WBF120

WLS120



Image of 120x60cm models Ref.:WBF120 and Ref.:WLS120 (on the left) and Ref.:WBF120 applied (ambient image).

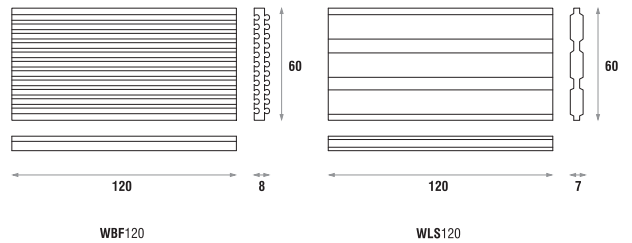
DESCRIPTION

WIDEBAFFLE® is our acoustic baffle to be applied in large rooms. This baffle is ideal to reduce reverberation time and airborne noise in gyms, pools, cafeterias, churches, schools, nightclubs, metal buildings and multipurpose rooms. It is a mandatory tool for airborne noise control problems and a very low cost solution.

The WIDEBAFFLE® is easy to install and can be assembled in very different aesthetic combinations. These sound baffles are typically suspended from the ceiling, and may also be used as acoustic wall panels, helping decrease the reflected sound energy.

And now we have another model with the same efficiency but with a different design, the WIDEBAFFLE LS®.

TECHNICAL DRAWINGS



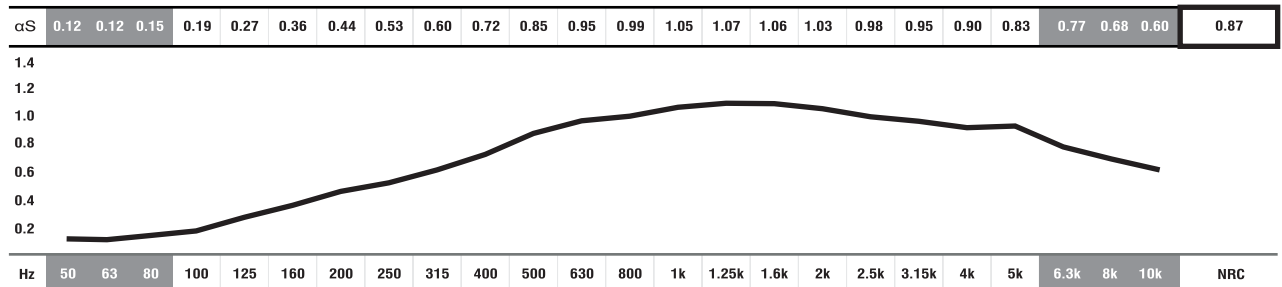
FEATURES

- NRC: **0.87/m²** [$>250\text{Hz}; <10\text{KHz}$].
- Raw material: melamine resin or standard acoustic foam.
- **MELAMIN RESIN** - Flame resistance: Germany B1, France M1, GB class1, USA V0/HF1.
- **ACOUSTIC FOAM** - Self-extinguishable M1 fire-retardant foam.
- Package: 5 units or 12 units.
- Very easy to install.

MODELS AND SIZES

MODELS	HEIGHT	WIDTH	DEPTH	WEIGHT
WBF120	120 cm	60 cm	8 cm	1 Kg
WLS120	120 cm	60 cm	7 cm	1 Kg

ABSORPTION COEFFICIENT



■ ABSORPTION COEFFICIENT: Values in accordance with the standards: EN 20654, ASTM C423 and EN 11654.

■ Values [$<100\text{Hz}$ and $>5\text{K}$] are Non Standard Values.

*PANEL DATA ONLY OF REF.: WBF120 REGULAR FOAM.

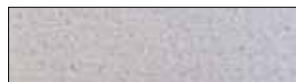
REGULAR AND MELAMINE FOAM COLOURS



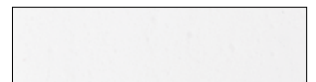
CREAM
Regular Foam
FR 25



GREY
Regular Foam
FR 25



LIGHT GREY
Melamine Foam
BTEC G



WHITE
Melamine Foam
BTEC G

IMPORTANT NOTICES

- JOCAVI® accepts no responsibility for any printing errors. Specifications can be modified without prior notice, if technical or commercial reasons so require.
- The colours shown on this catalogue are only a reference and an illustration of the products finishing. The colours shown are not binding because brightness, contrast and colour balance may vary due to the printing process.
- Colours may vary due to raw-material suppliers' changes and some differences may occur in tonal range.
- Typical Indoor Comfort Standards state a temperature range of 20°C - 27°C (68°F - 81°F), and a relative humidity of less than 60%. These would be considered as normal operational levels of JOCAVI® products' range.
- Despite all the standard sizes of all products, this model can be customised upon previous consultation. Sizes may vary slightly due to their production method and some inherent raw-materials characteristics.